



操作說明

帳號申請 & 登入

帳號註冊

使用者第一次使用時，
需要選擇以下一種帳戶進行註冊。



young woman with creative face-art
art, artificial, artistic, beautiful, beauty, body-art, close-up, colored, copy-space, cosmetics

Inspiration **Concept** **Textile**

Enter

Login × CLOSE

Please choose one way to login/apply a account.

應用程式授權



Step1. 使用現有的Facebook帳號註冊登入

Facebook Login

Log in to use your Facebook account with PTC.

Email or Phone:

Password:


Keep me logged in

[Log In](#) or [Sign up for Facebook](#)

[Forgot your password?](#)

[中文\(台灣\)](#) [English \(US\)](#) [Español](#) [Português \(Brasil\)](#) [Français \(France\)](#) [Deutsch](#) [Italiano](#) [العربية](#) [हिन्दी](#) [中文\(简体\)](#)

Step2. 同意應用程式授權

 **PTC**

[Go to App](#) [Cancel](#)

4 people use this app

ABOUT THIS APP You are logging into PTC as Ptcuser Ptcuser.	THIS APP WILL RECEIVE: <ul style="list-style-type: none">Your basic info [?]Your email address (starbellze@gmail.com)
Who can see posts this app makes for you on your Facebook timeline: [?] Friends	

By proceeding, you will be taken to www.designptc.com · [Report App](#)

Accounts

Designptc.com is asking for some information from your Google Account. To see and approve the request, sign in. [Learn more](#)

應用程式授權

Step1. 使用現有的Gmail帳號註冊登入



Sign in Google

Email
ptcdesignonly

Password
.....

Stay signed in

[Can't access your account?](#)

Google accounts

[Sign in as a different user](#)

Designptc.com Google

Designptc.com is asking for some information from your Google Account **ptcdesignonly@gmail.com**

• Email address: ptcdesignonly@gmail.com

Remember this approval

Step2. 同意應用程式授權

授權碼 (Authorization Code)

1. 第一次登入系統時，會需要輸入一組授權碼以確認使用者的使用身分。
2. 在授權碼的使用期限內，只需要完成一次認證，即可以使用完整功能。
3. 授權碼認證成功後，原輸入授權碼區域會轉換為快速搜尋區域。

* 如何取得授權碼

PTC目前僅提供學校（研究機關）或團體單位使用，需成為採購客戶或試用客戶才可獲得授權碼。

若您為個人使用者，建議您可向您所屬單位之圖書館或負責人員推薦採購或試用，我們將請專人與貴單位聯繫。

若您已是團體用戶，請向所屬單位之圖書館或負責人員領取授權碼。

或請提供您的疑問、單位名稱等資訊寄至 service@designptc.com，客服人員將盡速為您服務。

The screenshot shows the PTC website interface. At the top right, there is a user profile section with "hi, ptc user" and a "Sign out" link. Below this is an "Authorization Code" input field with a question mark icon and a "Confirm" button. The main content area displays a search result for "Crystals reflecting bright light" with the following details:

- Title:** Crystals reflecting bright light
- Keywords:** abstract, bright, chandelier, colour, crystal, diamond, facet, gem, glass, glitter
- Image Grid:** A grid of images including a large image of crystals, a person wearing a patterned garment, and several smaller pattern swatches.
- Navigation:** Left and right arrows for navigating through the image grid.
- Color Palette:** A row of color swatches below the image grid, with "Inspiration", "Concept", and "Textile" labels above them.
- Buttons:** An "Enter" button at the bottom right of the image grid.
- Footer:** Links for "About PTC", "Site map", "Contact us", and "Copyright & Privacy policy", along with a copyright notice: "All contents © Kompass Book Ltd. All rights reserved".

This close-up screenshot shows the search bar area. It features the user profile "hi, ptc user" and "Sign out" link at the top. Below is a search input field containing the placeholder text "insert keywords" and a search button with a magnifying glass icon. At the bottom, there is a "► Advanced Search" button.

Crystals reflecting bright light

abstract, bright, chandelier, colour, crystal, diamond, facet, gem, glass, glitter



帳號資訊

點選使用者名稱字樣後，
可以自行編輯使用者資料，
並顯示使用者的下載資訊。

Download Remaining

Download period left :

	Images & Patten/Flatse	Textile	Image Board
Downloaded			
Remaining			

Contract left:

Account Settings

First Name:	<input type="text" value="ptc"/>
Last Name:	<input type="text" value="user"/>
Email*:	ptcuser@designptc.com
Company:	<input type="text"/>
Country:	<input type="text" value="- select -"/>
City:	<input type="text"/>

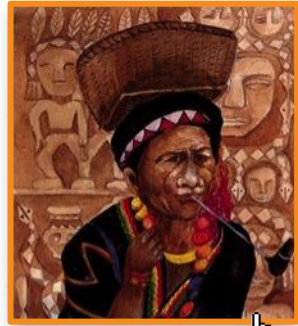
Subscribe Epaper?

[Cancel](#) [Save](#)

瀏覽 & 搜尋

四大資料庫內容

1. 靈感圖庫
2. 布樣圖庫
3. 編輯者靈感創作圖庫
4. 版型白描圖庫



1. Inspiration source



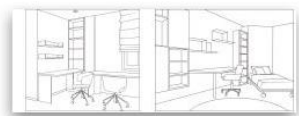
2. Textile source



3. Editor's inspiration



4. Pattern/Flats source



CATEGORY



animal



art



beauty



building



business



celebration



climate ecology



craft



culture



drink



eastern painting



education



environmental



food



fossil



furniture



garden



geometry



illustration



industrial



interior



landmark



landscape



music



park



people



performance



plant



product



recommendation

靈感圖分類瀏覽
-母分類

每個分類底下會有子分類
點選圖示進入子分類內容

- Inspiration Source
- Textile Source
- Pattern / Flats Source
- Editor's Inspiration
- My Favorite
- Individual Design

[index](#) > [Inspiration Source](#) > animal

benthos



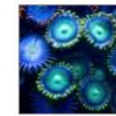
MORE >

bird



MORE >

coral



MORE >

insect



MORE >

mammal



靈感圖分類瀏覽
-子分類

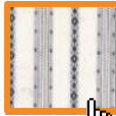
點選圖片進入詳目頁面

點選進入子分類完整內容

- Inspiration Source
- Textile Source
- Pattern / Flats Source
- Editor's Inspiration
- My Favorite
- Individual Design

[index](#) > Textile Source

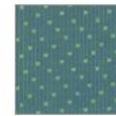
woven-shirting



stripe



check



[other](#)

print



animal



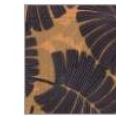
classic



flower



geometric



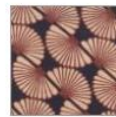
hawaii



life



over print



territories

tie



stripe



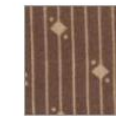
check



solid



jacquard



print



dobby

woven-bottom



布樣圖分類瀏覽 -母分類

每個分類底下會有子分類
點選圖示進入子分類內容

Inspiration Source

Textile Source

Pattern / Flats Source

Editor's Inspiration

My Favorite

Individual Design

[index](#) > [Textile Source](#) > woven-shirting > stripe



alternating stripe



awning stripe



balanced stripe



bengal stripe



blazer stripe



candy stripe



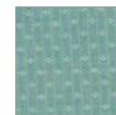
chalk stripe



double stripe



end on end stripe



hairline



jermyn



multicolor



multitrack-fancy stripe



oxford stripe



pencil stripe



pin stripe



regimental stripe



run on stripe



shadow stripe



tape stripe



jaspe stripe



seersucker stripe



space dye stripe



basic stripe



nubby stripe



ikats stripe



vintage stripe



engineer patt stripe



pajama stripe



cottonseed stripe

布樣圖分類瀏覽 -子分類

點選子分類圖片，進入分類定義頁面。

[index](#) > [Textile Source](#) > [woven-shirting](#) > [stripe](#) > [alternating stripe](#)



alternating stripe

Same under painting. Colors A and B appear alternatively on the upper stripe.

布樣分類定義



布樣圖分類瀏覽 -分類定義

點選圖片進入詳目頁面

[Inspiration Source](#) | [Textile Source](#) | [Pattern / Flats Source](#) | [Editor's Inspiration](#) | [My Favorite](#) | [Individual Design](#)

CATEGORY



Womenswear



Menswear



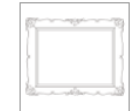
Childrenswear



interior



furniture



home furnishings



electronic product



transport



office stationery



instrument



cosmetic



pet accessory



building



accessary



packing



editor's theme



other

版型白描圖 分類瀏覽 - 母分類

每個分類底下會有子分類，
點選圖示進入子分類內容。



Inspiration
Source

Textile
Source

Pattern/
Flats Source

Editor's
Inspiration

My Favorite

Individual
Design

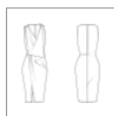
[index](#) > [Pattern Source](#) > Womenswear

skirt



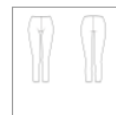
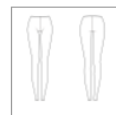
[MORE >](#)

dress



[MORE >](#)

pants



[MORE >](#)

woven shirt



[MORE >](#)

knit wear




版型白描圖 分類瀏覽-子分類

點選圖片進入詳目頁面

點選進入子分類完整內容

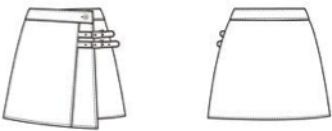
詳目頁面



Details
subject: Anemone and Nemo fish close-up, Sulawesi, Borneo
Copyright: Khoroshunova Olga
Keywords: anemone, anemonefish, animal, backdrop, background, borneo, caribbean, close-up, clownfish, color

[Add to Favorite](#) [Create](#)

採用此版型白描圖作為設計創作應用，開始創作意象板



Details
subject: wrap skirt
Copyright: Airiti Inc.
Keywords: women, female, bottom, wrap, skirt, casual, short

[Add to Favorite](#) [Create](#)

圖片資訊



Details
Object number: N218580001017204
Type: Apparel / woven-shirting / stripe / alternating stripe
Weave structure: B-dobby
Color: red / white
Pattern size: micro/mini (pattern repeat size less than 1 cm)

[Add to Favorite](#) [Create](#)

採用此圖片作為靈感圖，開始創作意象板

將此圖片存入我的最愛 (My Favorite)



系統分析之圖片色彩結果

Inspiration Source

Textile Source

Pattern / Flats Source

Editor's Inspiration

My Favorite

Individual Design

[index](#) > Editor's Inspiration

CATEGORY



art



beauty



animal



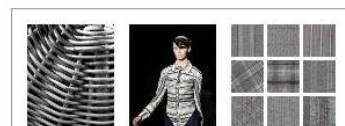
building



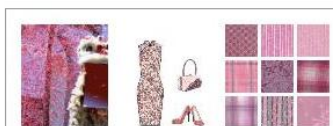
celebration



climate ecology



craft



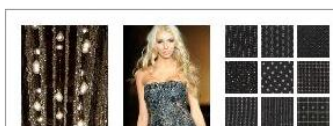
culture



drink



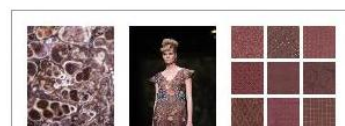
eastern painting



furniture



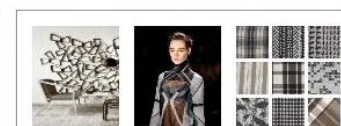
food



fossil



garden



interior

編輯者靈感創作 分類瀏覽-母分類

每個分類底下會有子分類，
點選圖示進入子分類內容。

編輯者創作意象板分享，
作為使用者靈感創作參考。

Inspiration Source

Textile Source

Pattern / Flats Source

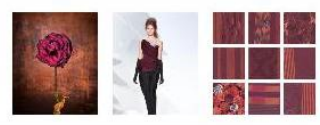
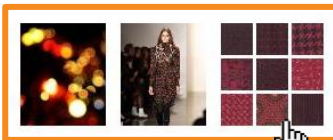
Editor's Inspiration

My Favorite

Individual Design

[index](#) > [Editor's Inspiration](#) > art

photograph



modern art



[MORE >](#)

Page of 1

編輯者靈感創作
分類瀏覽-子分類

點選圖片進入詳目頁面

點選進入子分類完整內容

創作意象板

創作意象板資訊

1. 標題
2. 關鍵字
3. 敘述說明

Abstract circular bokeh background of Christmaslight

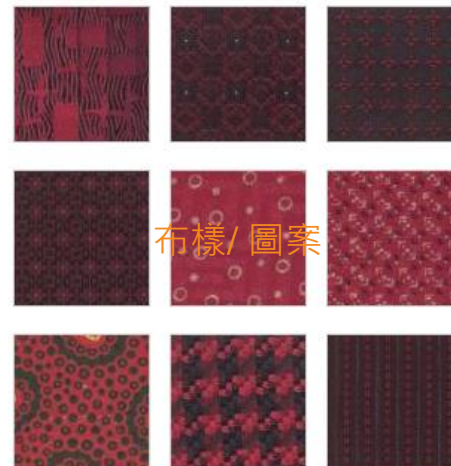
abstract, background, black, blur, blurry, bokeh, bright, bulbs, christmaslight, circles



靈感來源



設計應用結果



布樣/ 圖案

< Page 1 of 25 > 225 image results



系統分析之圖片色彩結果

所選擇作為創作意象板主色之色票



編輯/ 創作意象板

將此創作意象板存入我的最愛 (My Favorite)

搜尋

1. 快速搜尋區域
提供關鍵字搜尋
2. 進階搜尋
(Advanced Search)

young woman with creative face-art
art, artificial, artistic, beautiful, beauty, body-art, close-up, colored, copy-space, cosmetics

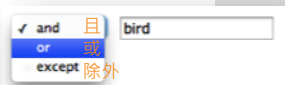
Inspiration **Concept** **Textile**

Enter

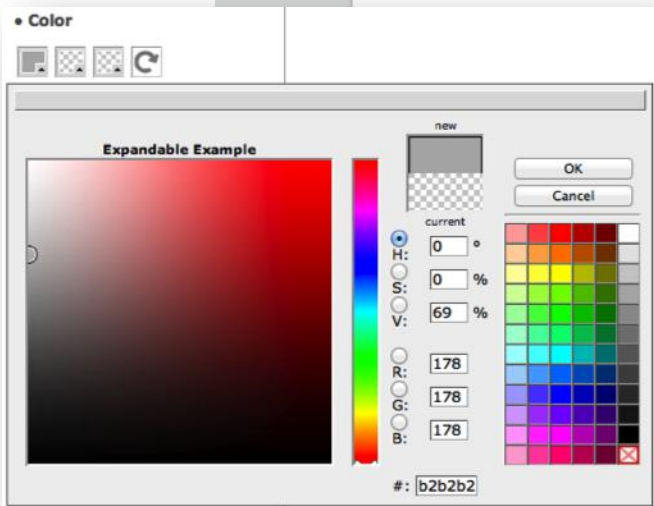
- Inspiration Source
- Textile Source
- Pattern/Flats Source
- Editor's Inspiration
- My Favorite
- Individual Design

進階搜尋

設定關鍵字關聯



選擇顏色搜尋



Advanced Search

Keywords

animal

and mammal

or bird

Color

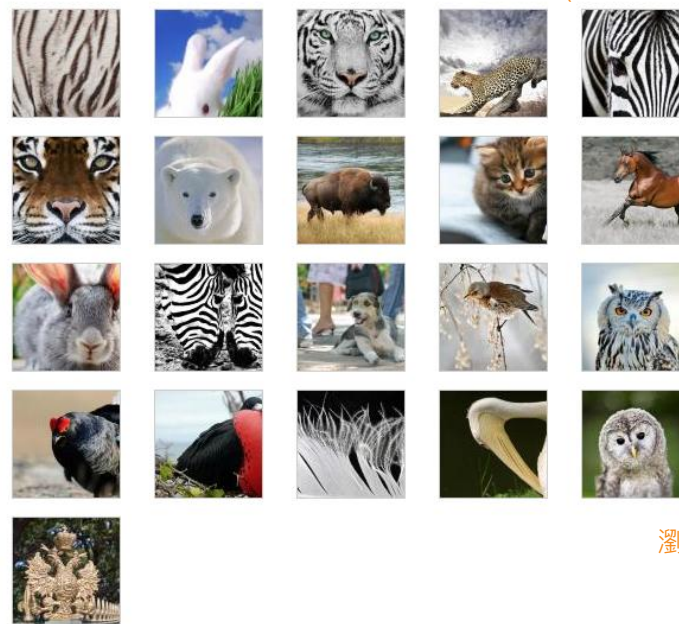


Search Result

搜尋的結果以圖庫類別顯示

Inspiration(21) Textile(0) Patterns/Flats(0) Editor's Inspiration(10)

(搜尋結果數量)



瀏覽其他類別圖庫

Page 1 of 1

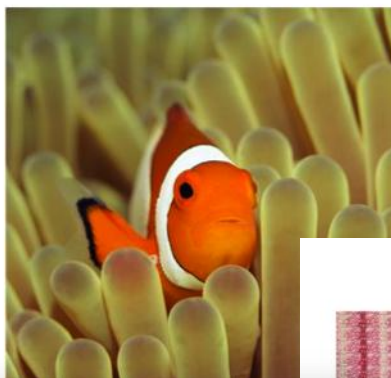
下一頁切換/
直接輸入頁碼跳轉指定頁面

我的最愛

加入我的最愛 (Add to My Favorite)

點選 "Add to Favorite" 將
圖片存入我的最愛。

提供一個捷徑讓使用者方
便且快速的存取喜愛的圖
片、布樣及創作意象板。



Details

subject: Anemone and Nemofish close-up. Sulawesi, Borneo
Copyright: Khoroshunova Olga
Keywords: anemone, anemonefish, animal, backdrop, background, borneo, caribbean, close-up, clownfish, color

Add to Favorite Create



Details

Object number: N218580001017204
Type: Apparel / woven-shirting / stripe / alternating stripe
weave structure: B-dobby
color: red / white
Pattern repeat: micro/mini (pattern repeat size less than 1 cm)

Add to Favorite Create



Details

subject: wrap skirt
Copyright: Airtiti Inc.
Keywords: women, female, bottom, wrap, skirt, casual, short

Add to Favorite Create

將此圖片加入我的最愛

Abstract circular bokeh background of Christmaslight

abstract, background, black, blur, blurry, bokeh, bright, bulbs, christmaslight, circles



Page 1 of 25 225 image results



Add to Favorite Modify

Inspiration Source

Textile Source

Pattern / Flats Source

Editor's Inspiration

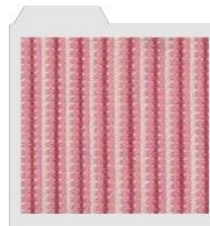
My Favorite

Individual Design

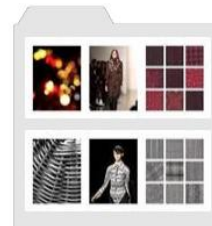
My Favorite



Inspiration Source



Textile Source



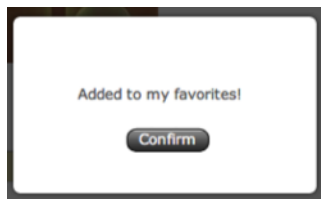
Editor's Inspiration



Pattern Cutting

瀏覽我的最愛

1. 當圖片成功存入我的最愛時，會出現以下提示



2. 確認後，即可在“**My Favorite**”頁籤分類瀏覽所儲存的的圖片、布樣及創作意象板。

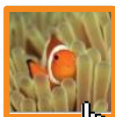
我的最愛

使用者可以在各類別下管理/刪除所儲存的圖片，或進入圖片的詳目頁面開始製作創作意象板。

- Inspiration Source
- Textile Source
- Pattern/Flats Source
- Editor's Inspiration
- My Favorite**
- Individual Design

My Favorite

[index](#) > [My Favorite](#) > [Inspiration Source](#)



Delete

< Page 1 of 1 >



Details

subject: Anemone and Nemo fish close-up. Sulawesi. Borneo

Copyright: Khoroshunova Olga

Keywords: anemone, anemonefish, animal, backdrop, background, borneo, caribbean, close-up, clownfish, color

[Add to Favorites](#)

Create



個人化設計

上傳圖片

1. 在"Individual design"頁籤底下，選擇個人電腦裡的圖片檔案上傳並編輯圖片分類及資訊。(圖片限制格式為JPG，且檔案大小小於10MB)
2. 閱讀授權條款並勾選"Agree"，按下"Save"，當出現下列提示即代表上傳成功，上傳的圖片將存在我的資料夾(My document)中。



My Document

Upload Image

- Choose image from your computer (Images requirement: JPG, < 10MB)

2806090.jpg

Browse

Choose Category

illustration



- Edit image information

Title city view sketch

Keyword

Description

- Authorize

application. Every application, no matter how large or small, needs some form of security and encryption. Any user data you have is extremely valuable to potential hackers and should be protected. Basic encryption should be used when your application stores a password or some other form of identifying information.

Different levels of sensitive data require different encryption algorithms. Knowing which level to use can be determined by answering the basic question, "Will I ever need access to the original data after it has been encrypted?" When storing a user's password, using a heavily salted MD5 hash and storing that in the database is sufficient; then, you would use the same MD5 hashing on the input and compare the result from the database. When storing other sensitive data that will need to be returned to its original input, you would not be able to use a one-way hashing algorithm such as MD5; you would need a two-way encryption scheme to ensure that the original data can be returned after it's been encrypted.

Encryption is only as powerful as the key used to protect it. Imagine that an attacker breaches your firewall and has an exact clone of your database; without the key, breaking the encryption that protects the sensitive data would be nearly impossible. Keeping the key in a safe place should always be priority number one. Many people use an ini file that's read at runtime and that is not publicly accessible within the scope of the Web server. If your application requires two-way encryption, there are industry standards for protecting such data, one being AES encryption.

Agree

Disagree

Save

Cancel

Upload successful! Pictures has saved in My document .

Confirm

Inspiration Source

Textile Source

Pattern / Flats Source

Editor's Inspiration

My Favorite

Individual Design

我的資料夾 (My document)

1. 所有上傳的圖片及個人的創作意象板將被儲存在我的資料夾中
2. 使用者可以管理/刪除所儲存的圖片，或修改個人制作的創作意象板。

index > [Individual Design](#) > My Document

Click image to edit/ create imageboard

• Image

• Imageboard

DELETE

MORE >

製作創作意象板

從靈感圖開始 製作創作意象板

在圖片/布樣的詳目頁點選“Create”開始製作創作意象板。



Details

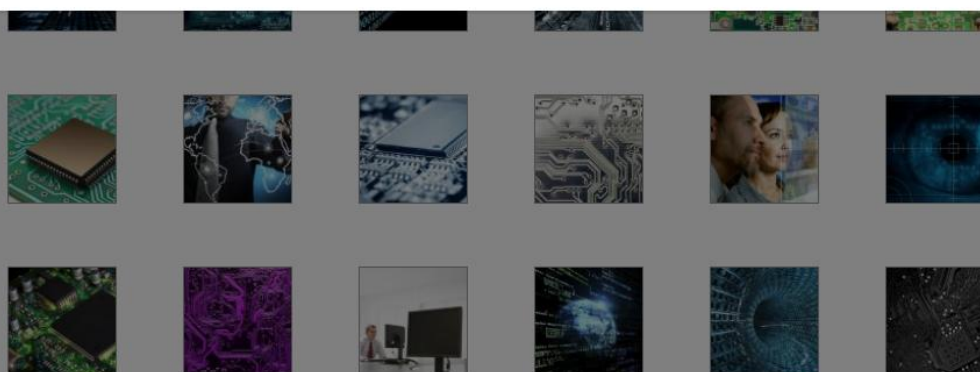
subject: Closeup of electronic circuit board with processor

Copyright: Volodymyr Krasyuk

Keywords: background, board, capacitor, card, chip, circuit, circuitry, close-up, communication, component

[Add to Favorite](#)

[Create](#)



以顏色搜尋 相關布樣

1. 在系統分析之靈感圖色票中選取1-3主色進行相關布樣搜尋。
2. 選出想要的布樣


Inspiration Source
Textile Source
Pattern/ Flats Source
Editor's Inspiration
My Favorite
Individual Design

Title

Keyword

Description

[HELP](#)



Upload Image

From My Favorite


From My Document

From Image Source

From Pattern/ Flats

Color Choosing

搜尋顏色相關布樣結果




choose 1-3 colors from above to search

#79cc5e, #194c45, #373730

Page 1 of 10

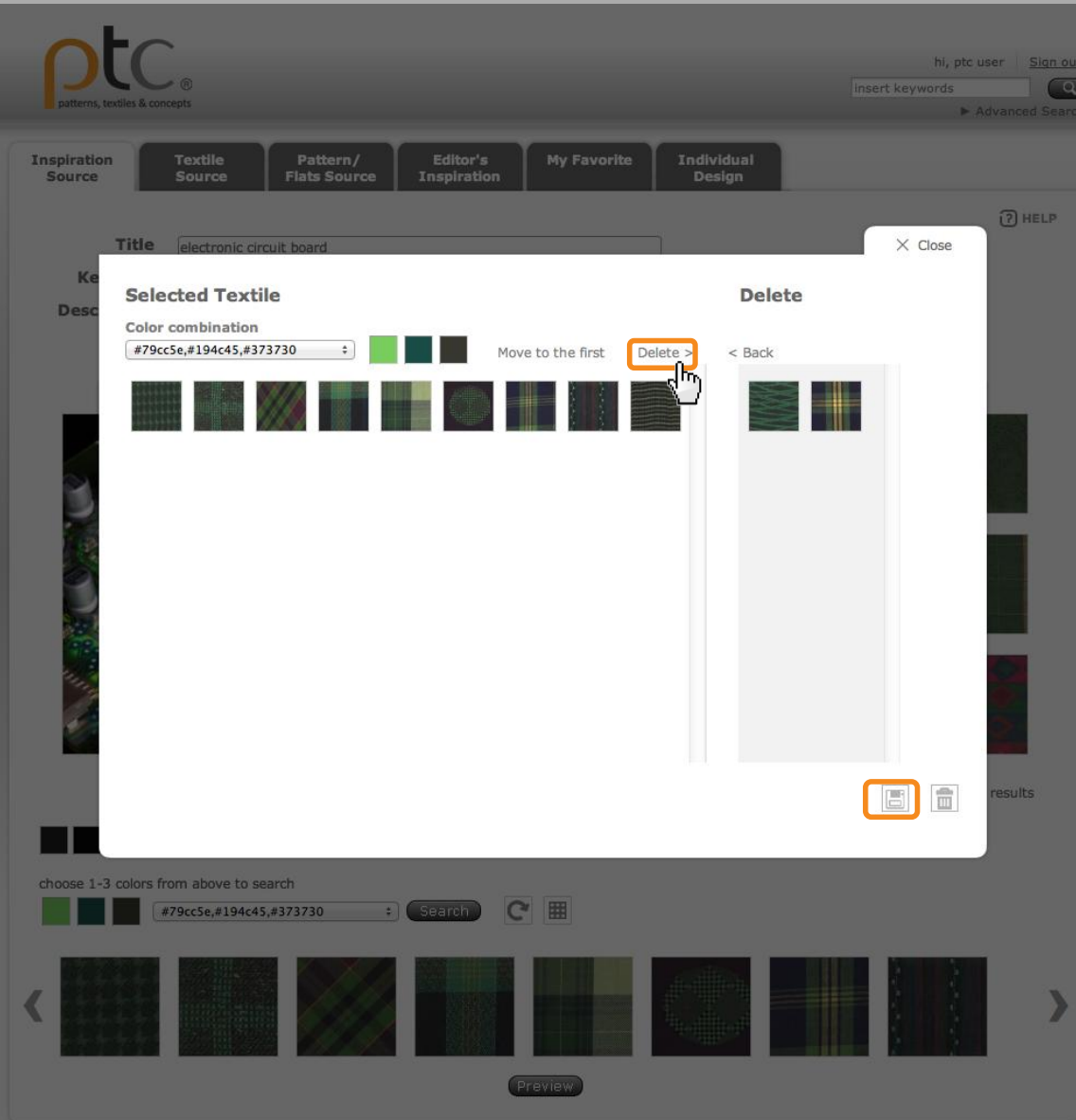
88 image results



▶

瀏覽選擇布樣

1. 如想取消選取布樣，可先選取欲刪除布樣按下“Delete >”，所選取布樣將會移至刪除區域。
2. 完成編輯後，點選  儲存變更。



The screenshot shows the PTC website interface. At the top, there is a navigation bar with the PTC logo and user information. Below the navigation bar, there are several tabs: "Inspiration Source", "Textile Source", "Pattern/Flats Source", "Editor's Inspiration", "My Favorite", and "Individual Design". The main content area displays a search result for "electronic circuit board". A modal window is open, titled "Selected Textile", which allows users to manage their selected patterns. The modal has a "Delete" button highlighted with a red box. Below the modal, there is a search bar and a row of pattern thumbnails. At the bottom of the page, there is a footer with links to "About PTC", "Site map", "Contact us", and "Copyright & Privacy policy", along with a copyright notice for Kompass Book Ltd.

Inspiration Source

Textile Source

Pattern / Flats Source

Editor's Inspiration

My Favorite

Individual Design

HELP

Title

Keyword

Description



Upload Image

From My Favorite

From My Document

From Image source

From Pattern / Flats

Color Choosing



Page 1 of 10 88 image results



choose 1-3 colors from above to search



Preview

加入你的設計

點選中間區域
加入你的設計成果

可利用以下方法:

1. 上傳自己的圖片
2. 從“我的最愛”選取
3. 從“我的資料夾”選取
4. 從圖庫中選取
5. 選擇板型白描圖創作
6. 以顏色搜尋圖片

選擇 一個設計應用圖

1. 上傳自己的圖片
2. 從“我的最愛”選取
3. 從“我的資料夾”選取
4. 從圖庫中選取
5. 選擇版型白描圖創作
6. 以顏色搜尋圖片

ptc
patterns, textiles & concepts

hi, ptc user | Sign out

insert keywords

▶ Advanced Search

Inspiration Source | Textile Source | Pattern/Flats Source | Editor's Inspiration | My Favorite | Individual Design

HELP

Title:

Keyword:

Description:

Close

Application Choosing


From My Favorite:

From Image Source:

From My Document:


From Patterns/Flats:

Color Choosing: *Please choose one color at least.



*請至少需輸入一項查詢條件

choose 1-3 colors from above to search



選擇一張圖片 表現你的設計

選擇一張圖片點選”Save”
回到製作頁面。

Inspiration
Source

Textile
Source

Pattern/
Flats Source

Editor's
Inspiration

My Favorite

Individual
Design

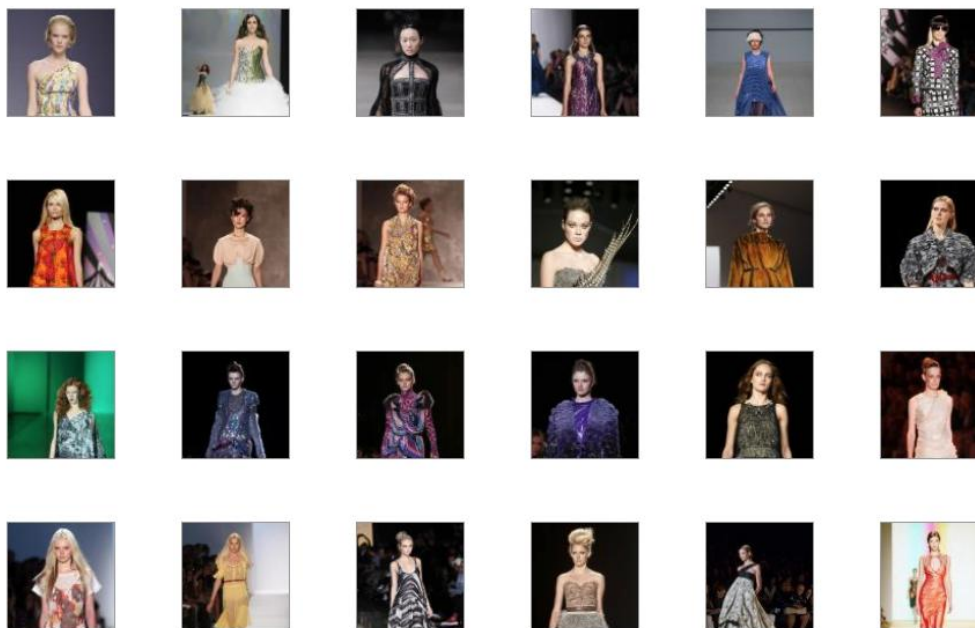
Title

Keyword

Description

HELP

Close



Page 1 of 39

929 image results

Cancel

Save

選擇版型白描圖 線上創作

選擇一張版型白描圖並點選“Save”回到製作頁面。

Inspiration Source | **Textile Source** | Pattern/ Flats Source | Editor's Inspiration | My Favorite | Individual Design

Title:
Keyword:
Description:

HELP

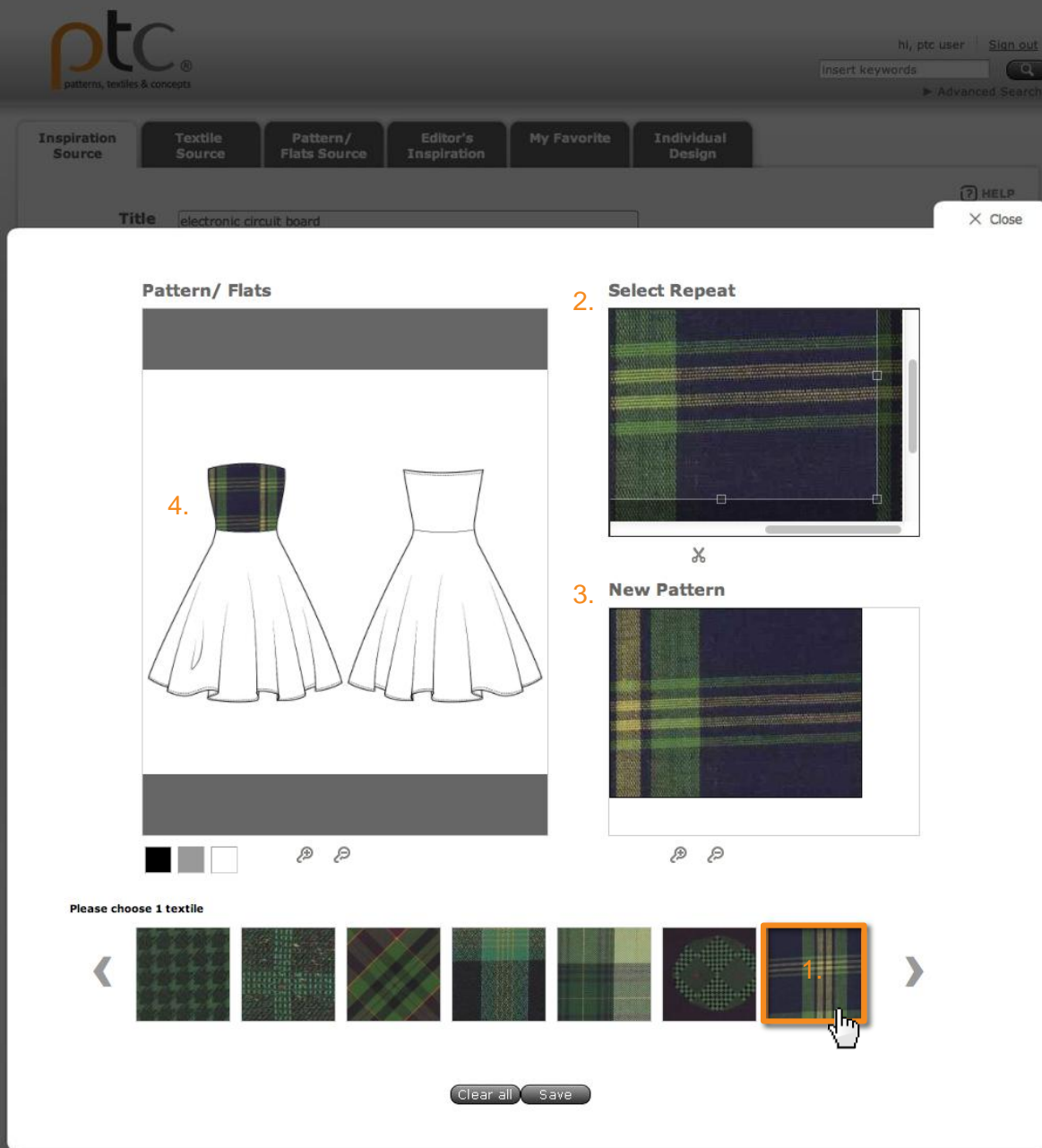
Close



Page 1 of 1 | 19 image results |

將布樣套用 至版型白描圖

1. 選取一個布樣
2. 在“Select Repeat”區域框選出圖案重複的範圍
3. 在“New Pattern”區域透過   調整圖案的大小
4. 點選欲填入的版型區塊
將布樣重複套入版型。
透過   輔助編輯細節



儲存

點選“Save”回到製作頁面進行編輯。

Inspiration Source

Textile Source

Pattern / Flats Source

Editor's Inspiration

My Favorite

Individual Design

Title electronic circuit board

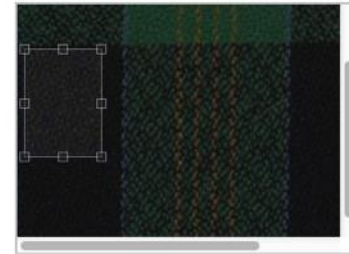
HELP

Close

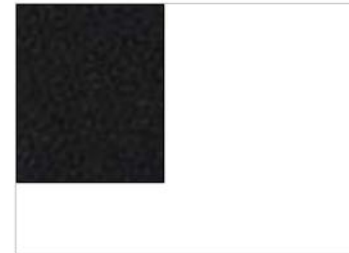
Pattern/ Flats



Select Repeat



New Pattern



Please choose 1 textile

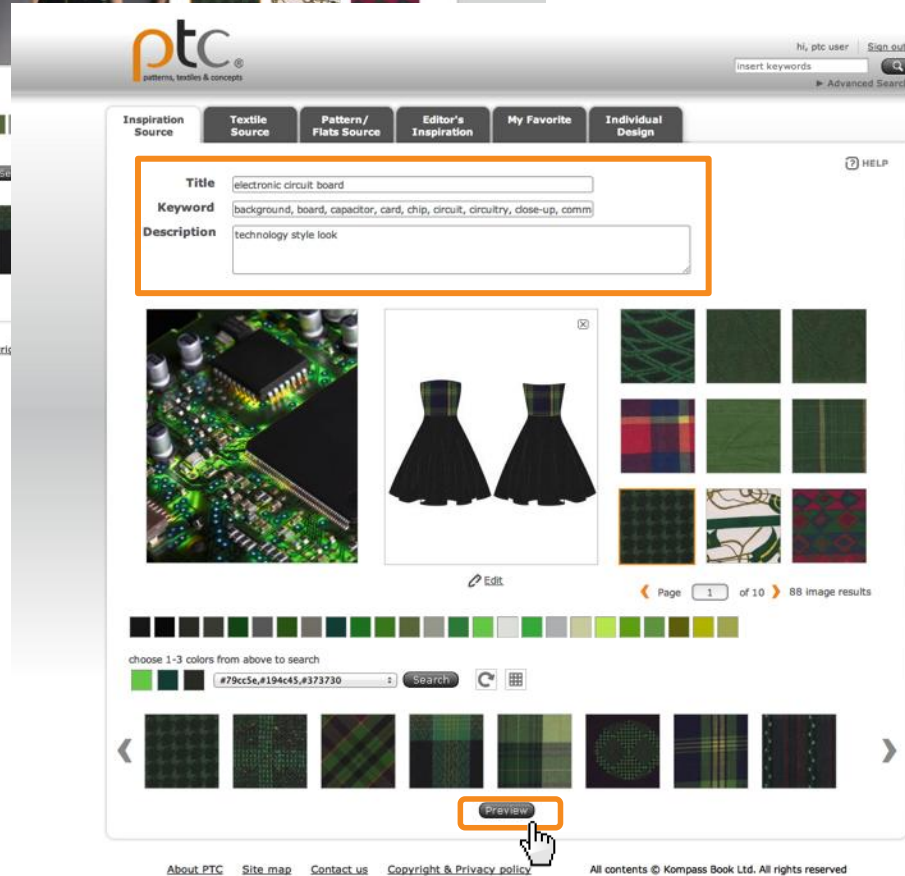
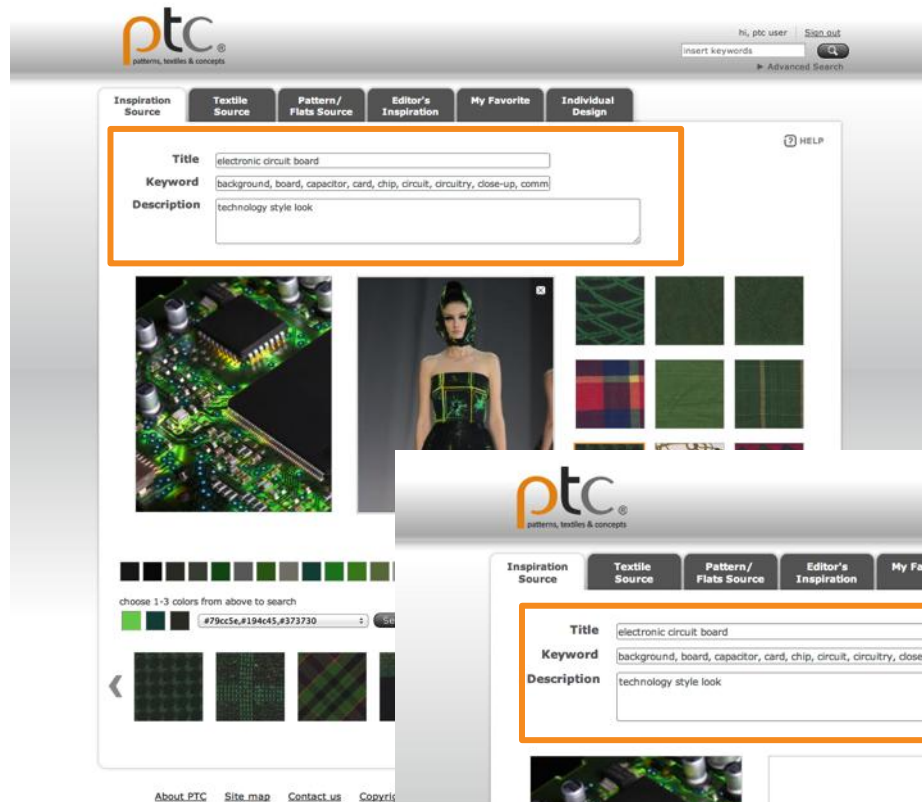


Clear all Save



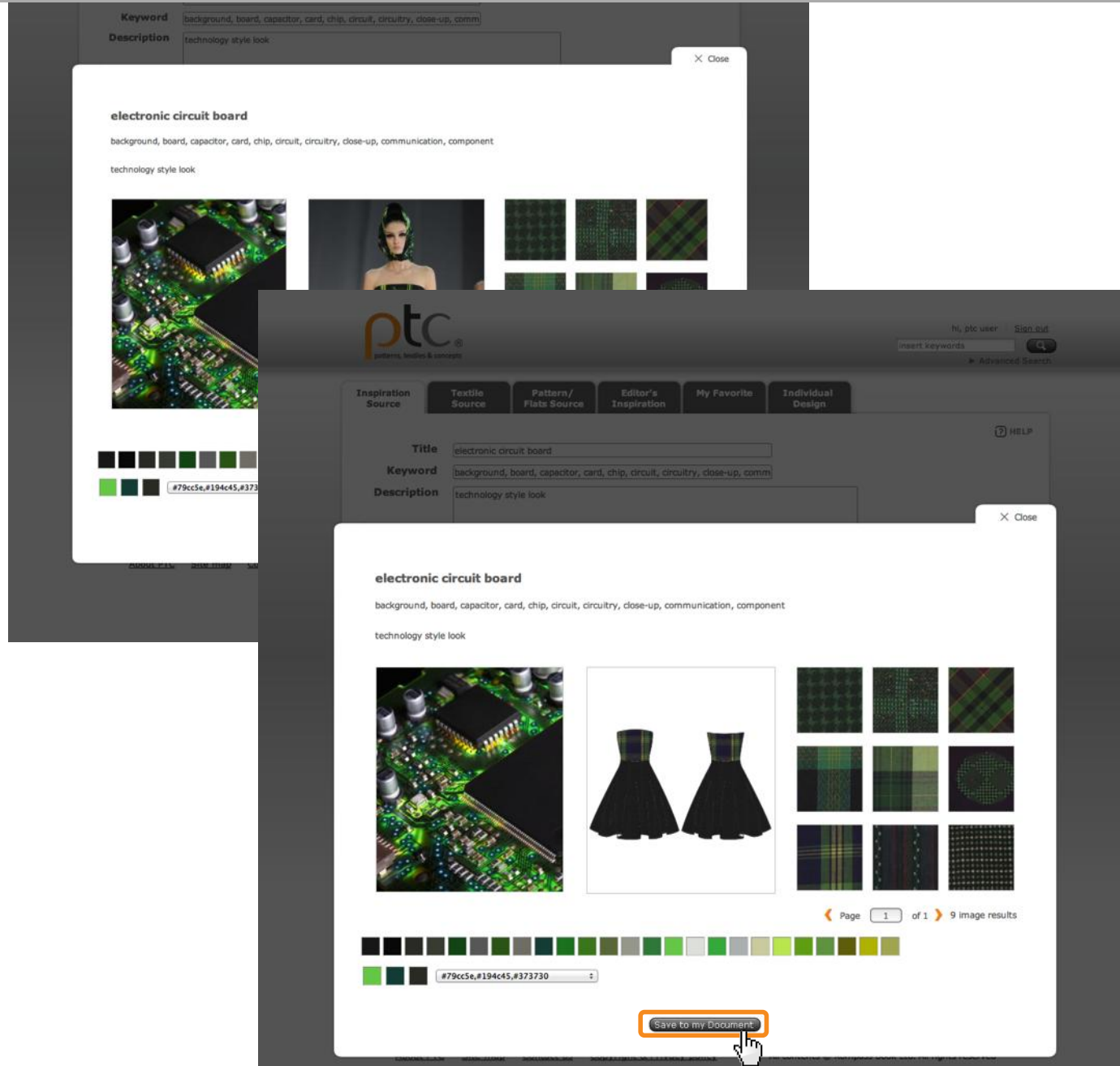
編輯資訊

1. 填入主題、關鍵字及說明內容
2. 點選“Preview” 預覽完成的創作意象板



儲存

完成的創作意象板將會被
儲存於我的資料夾。
(個人化設計).



修改

所有完成並儲存的創作意象板隨時可以進行修改。

Details

Title

Keyword

Description



Page 1 of 1 9 image results



Save **Modify**



